



North Ayrshire
Community Planning Partnership

Developing Locality Plans in North Ayrshire

Morna Rae

Overview of Locality Partnerships



- Six Locality Partnerships covering all of North Ayrshire
- Bring together Community Representatives, Elected Members, Community Planning Partners
- Identify and address local priorities
- Community Planning at a local level
- Consensus driven approach



Locality Partnership Membership

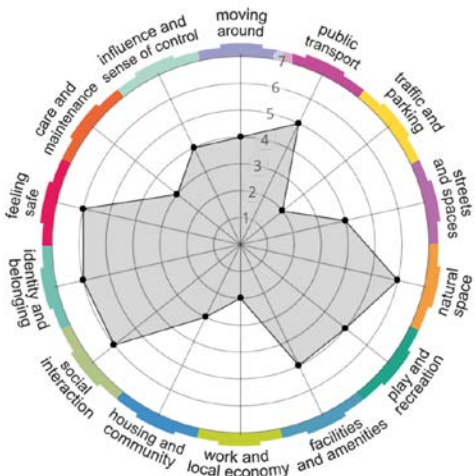
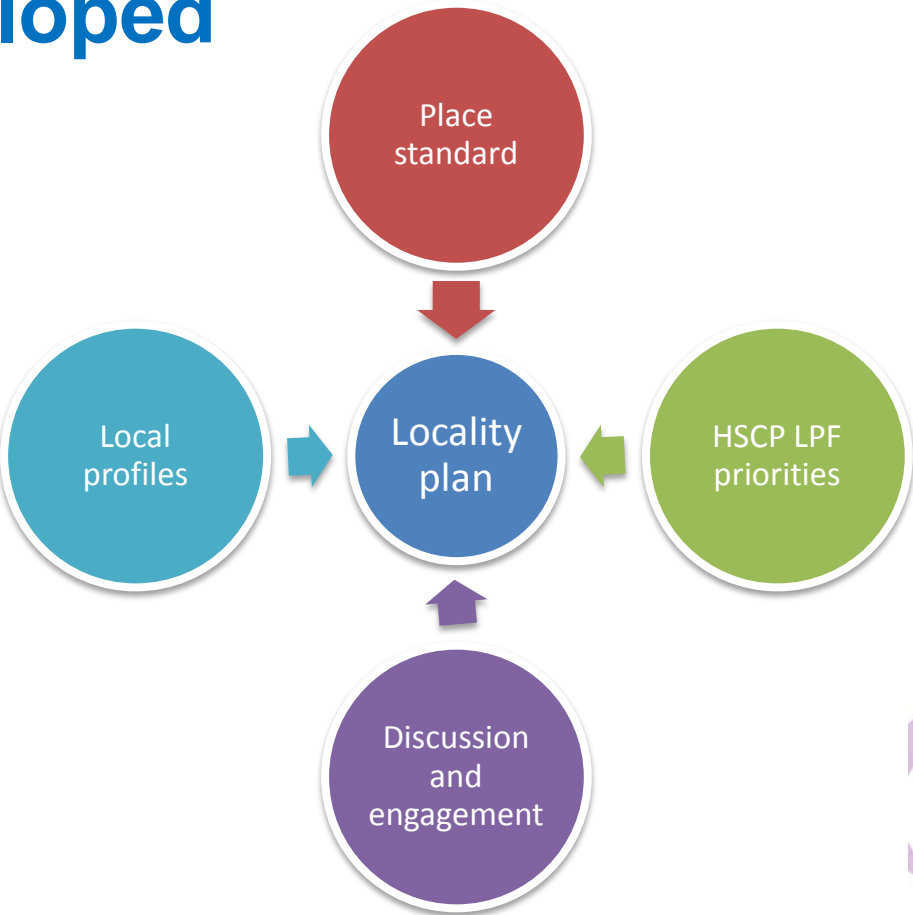


Functions of Locality Partnerships



- Develop and deliver on a **Locality Plan** with partners and wider community
- **Listen to, consult and represent** the community
- Inform the work of **Elected Members**
- **Participatory Budgeting**
- Support the role of **Community Councils**
- Name **new streets**
- Administer **grants**
- Respond to **consultations**
- Link with **Health and Social Care Partnership locality forums**

How Locality Plans Developed



North Ayrshire
Community Planning Partnership

Irvine LOCALITY PLAN

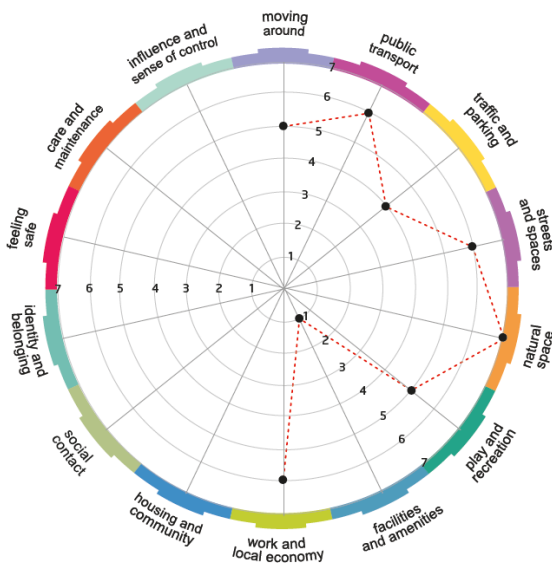


For more information about the Irvine Locality Partnership see <http://www.northyshire.community/your-community/irvine/>

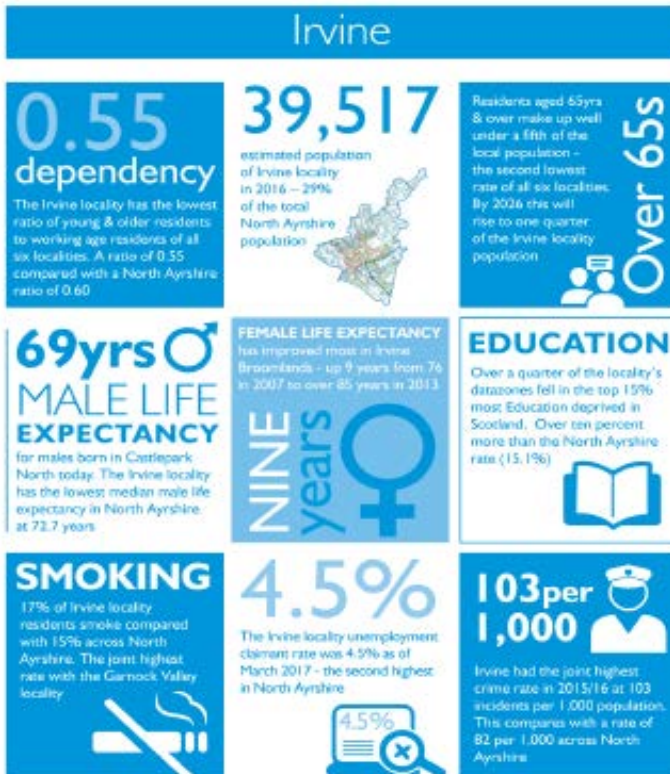
Locality Plans – Use of the Place Standard Tool



- Provides a simple framework to structure conversations about place.
- Covers the physical elements of a place (for example its buildings, spaces, and transport links) as well as the social aspects (for example whether people feel they have a say in decision making)
- Gives prompts for discussions, allowing you to consider all the elements of a place in a methodical way
- The tool pinpoints the assets of a place as well as areas where a place could improve
- Used in each locality to help identify priorities



Locality Plans – Local Profiles



- Profile created for each locality
- Wide range of socio-economic information
- Builds on original profiles produced in 2013/14
- Tool for Locality Partnerships to consider local assets and needs to inform local priorities

Local Priorities



North Coast & Cumraes

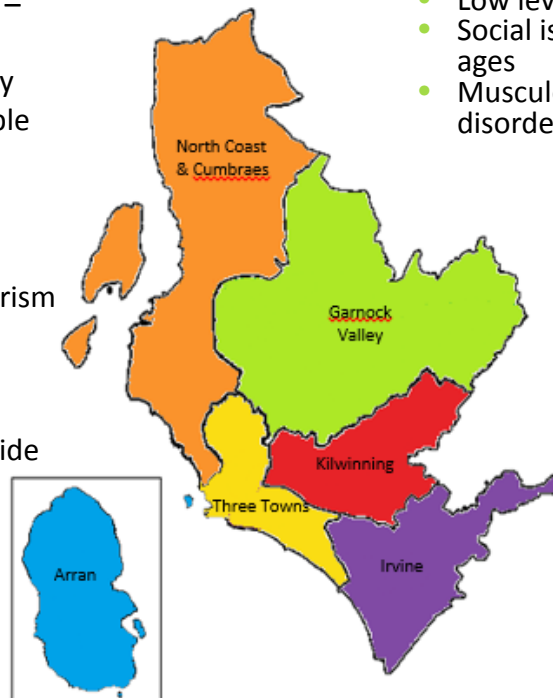
- | | |
|--|---|
| <p>HSCP</p> <ul style="list-style-type: none"> • Social isolation - older people • stress & anxiety • Musculoskeletal disorders • Financial inclusion | <p>CPP</p> <ul style="list-style-type: none"> • Financial inclusion • Social Isolation – older people • Stress & Anxiety – younger people |
|--|---|

Garnock Valley

- | | |
|--|---|
| <p>HSCP</p> <ul style="list-style-type: none"> • Young people’s – mental health & wellbeing • Low level mental • Social isolation -all ages • Musculoskeletal disorders | <p>CPP</p> <ul style="list-style-type: none"> • Work & local community • Moving around (public transport, traffic & parking) • Facilities & amenities |
|--|---|

Three Towns

- | | |
|---|---|
| <p>HSCP</p> <ul style="list-style-type: none"> • Mental health and wellbeing – young people • Social isolation • Financial inclusion • Support for complex needs | <p>CPP</p> <ul style="list-style-type: none"> • Economy and tourism • Community regeneration • Environment (including civic pride and community engagement) |
|---|---|



Kilwinning

- | | |
|---|---|
| <p>HSCP</p> <ul style="list-style-type: none"> • early years nurseries • GP sessions in nursing homes • Occupational Therapy advice in local pharmacy | <p>CPP</p> <ul style="list-style-type: none"> • Work and local economy • Traffic & parking • Housing & community (environmental issues) |
|---|---|

Arran

- | | |
|--|---|
| <p>HSCP</p> <ul style="list-style-type: none"> • Transport • Social isolation • Improve support - complex care needs | <p>CPP</p> <ul style="list-style-type: none"> • Affordable housing • Transport • Social isolation |
|--|---|

Irvine

- | | |
|---|--|
| <p>HSCP</p> <ul style="list-style-type: none"> • Social isolation - all ages • Low level mental health • Physiotherapy access | <p>CPP</p> <ul style="list-style-type: none"> • Employment & economy • Mental health • Traffic & parking • Influence & sense of Control |
|---|--|

Locality Plans – How are we Addressing the Priorities?



- Discussion at Locality Partnerships on key areas of focus
- Working groups focusing on individual priorities
- Sharing good practice across Locality Partnerships
- Inputs at Locality Partnerships on work already underway locally
- Community Investment Fund awards linking to local priorities
- Links to spatial planning and the Local Development Plan
- Links to Local Outcomes Improvement Plan outcomes