

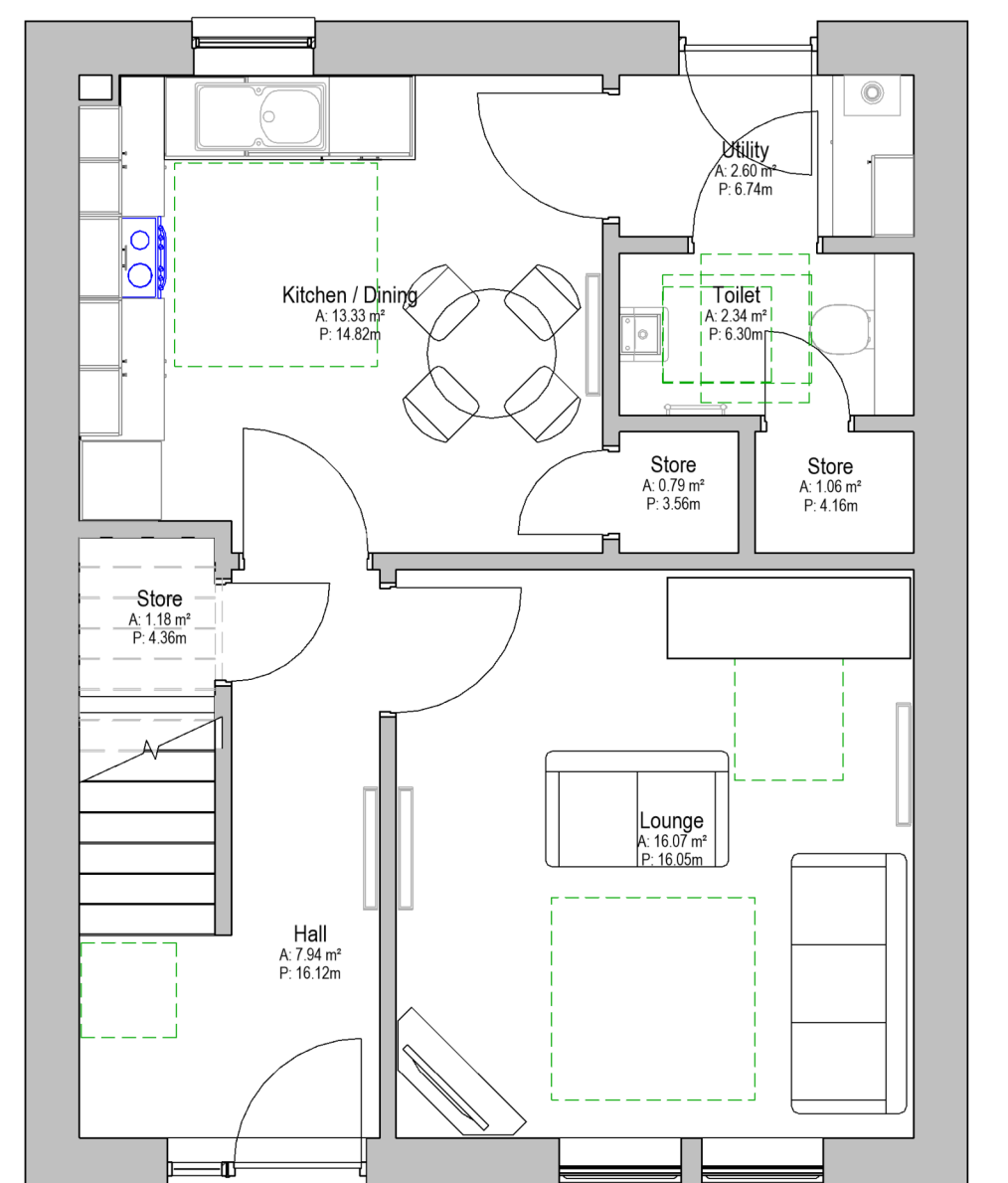
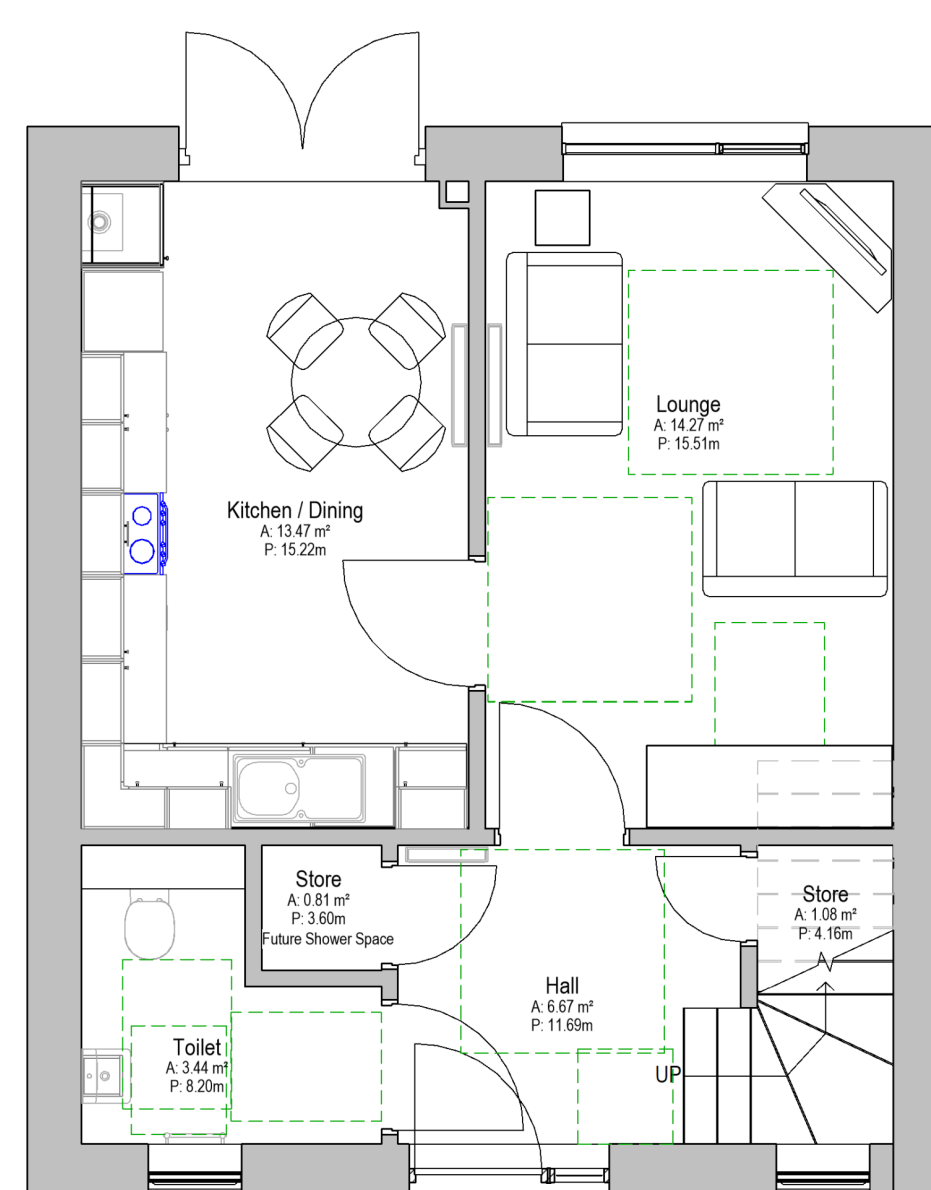
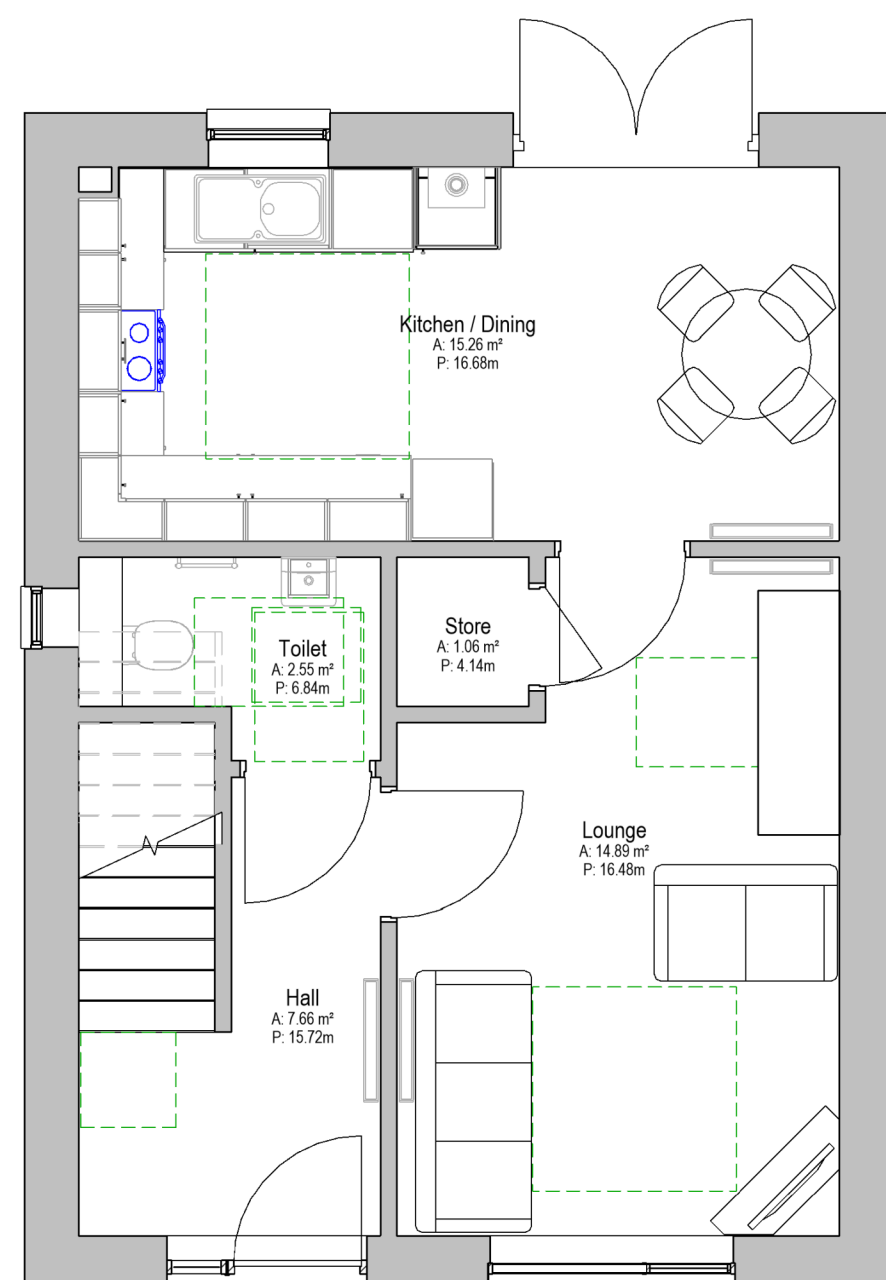
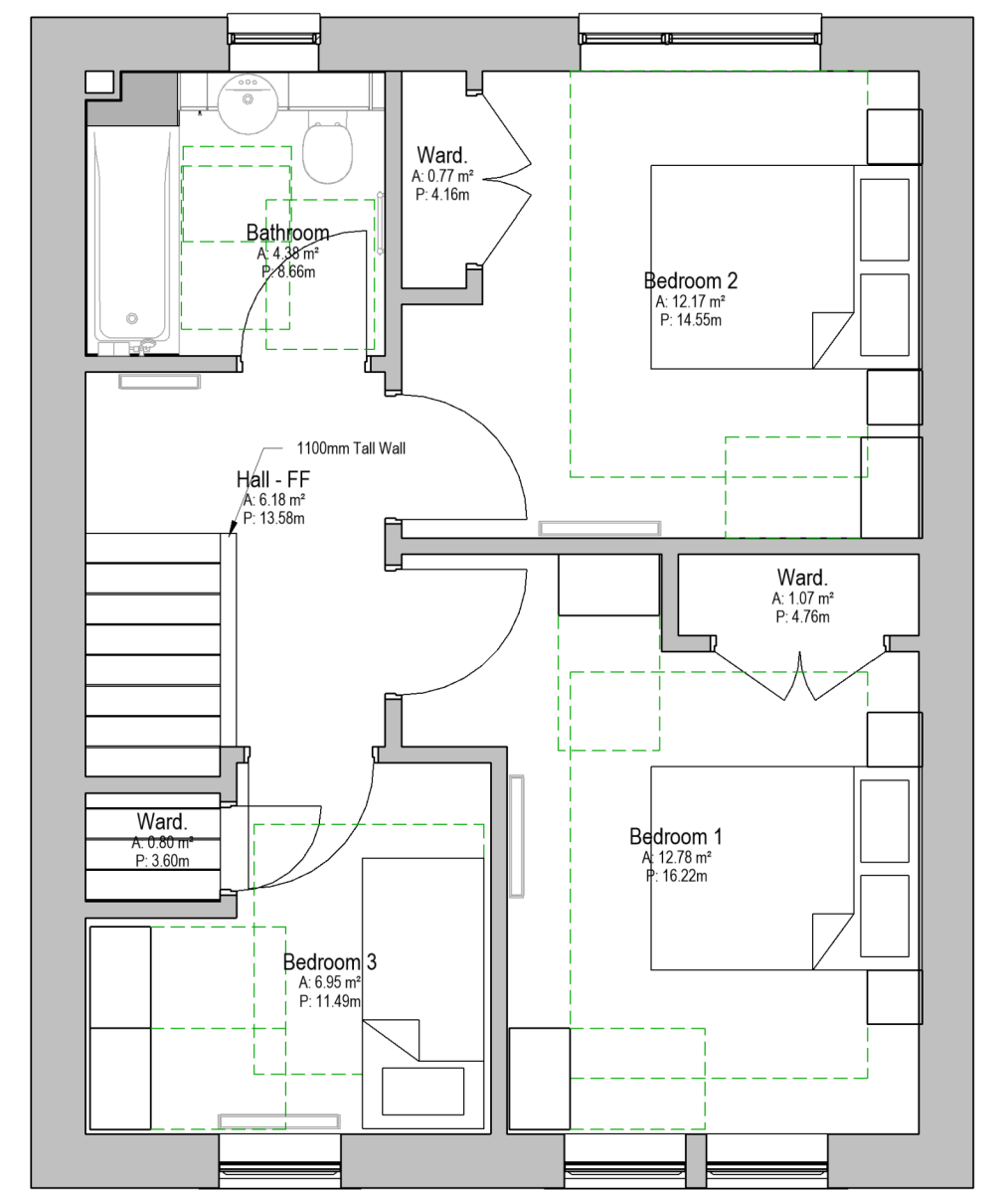
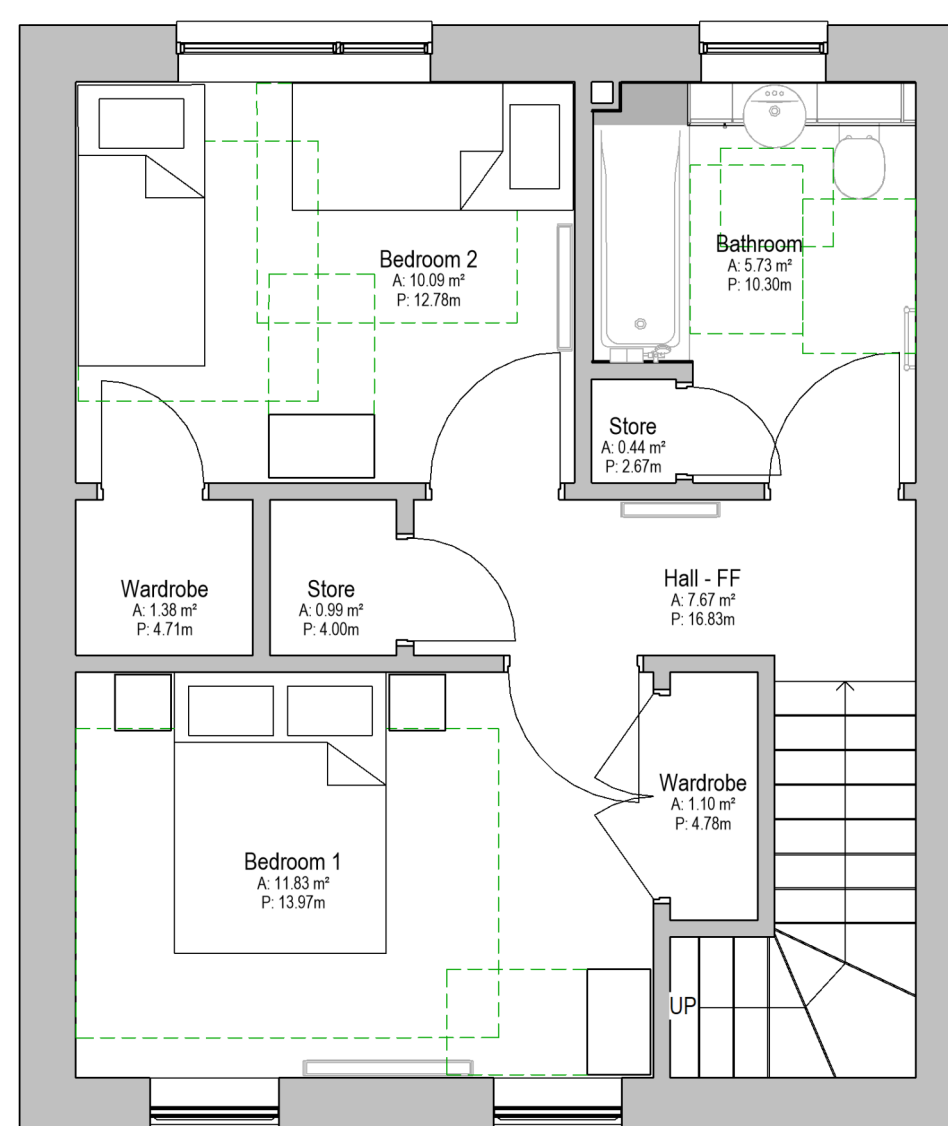
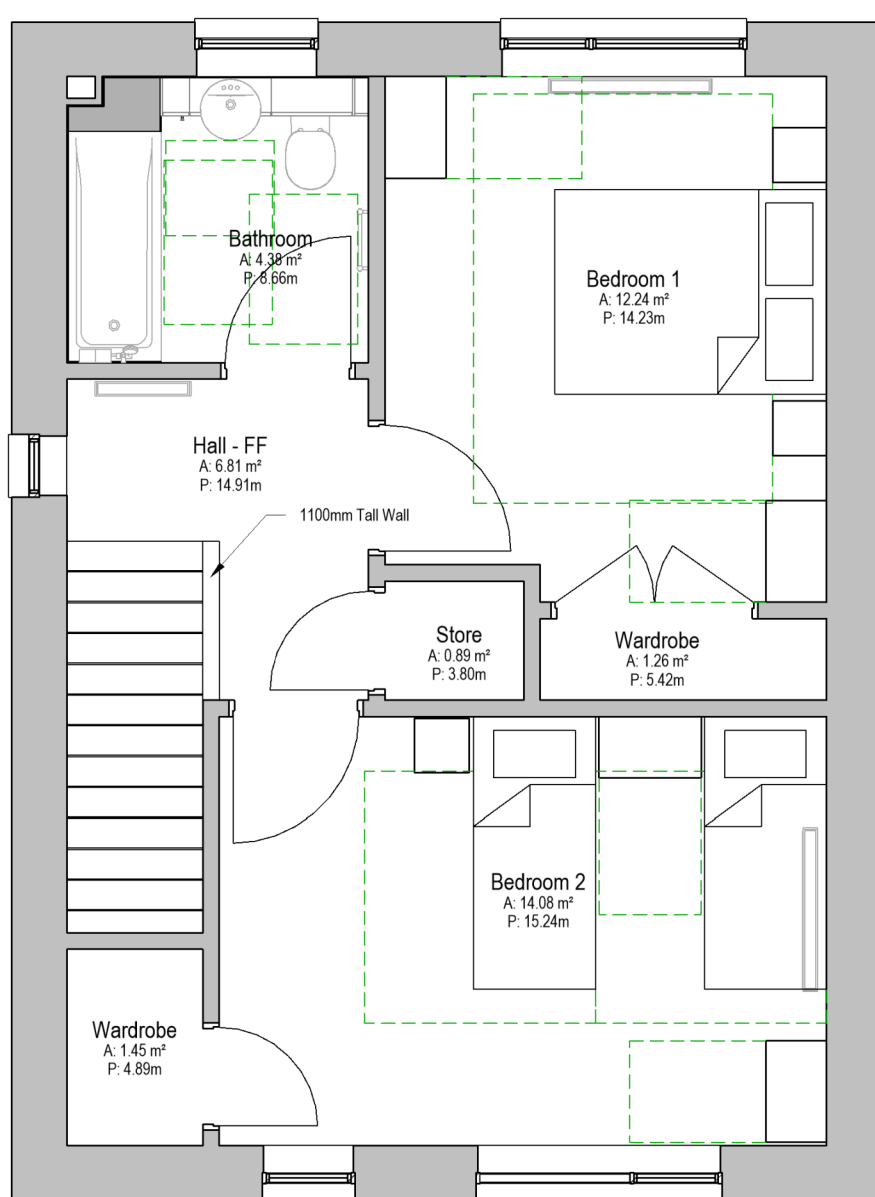
FINAL PLANS CONSULTATION



Existing Site Layout: Aerial View



Existing Harbourside housing



Type A 2 Bed / 4 Person
General Needs

Type B 2 Bed / 4 Person
General Needs

Type C 3 Bed / 5 Person
General Needs



FINAL PLANS CONSULTATION



Proposed Site Layout

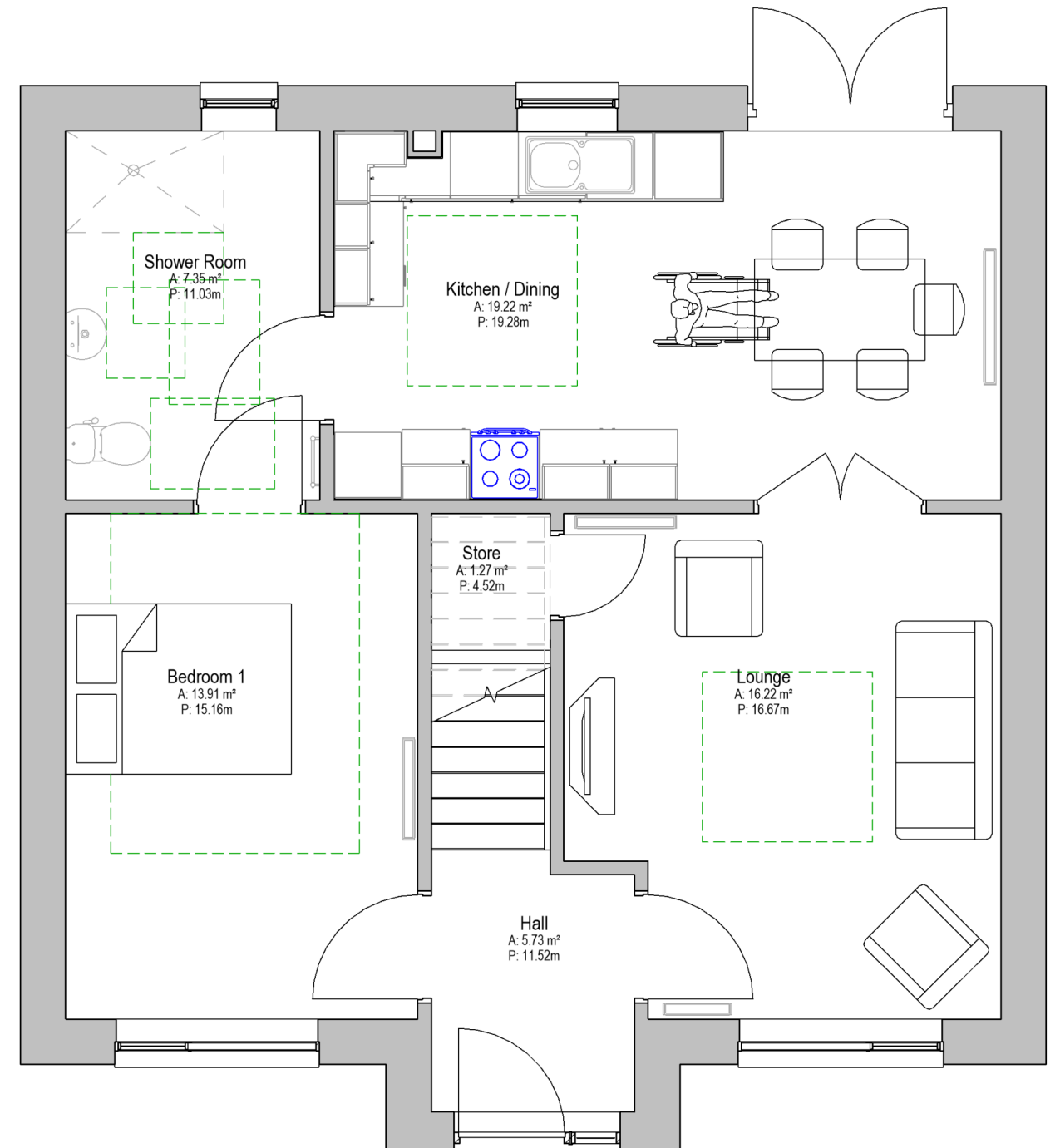
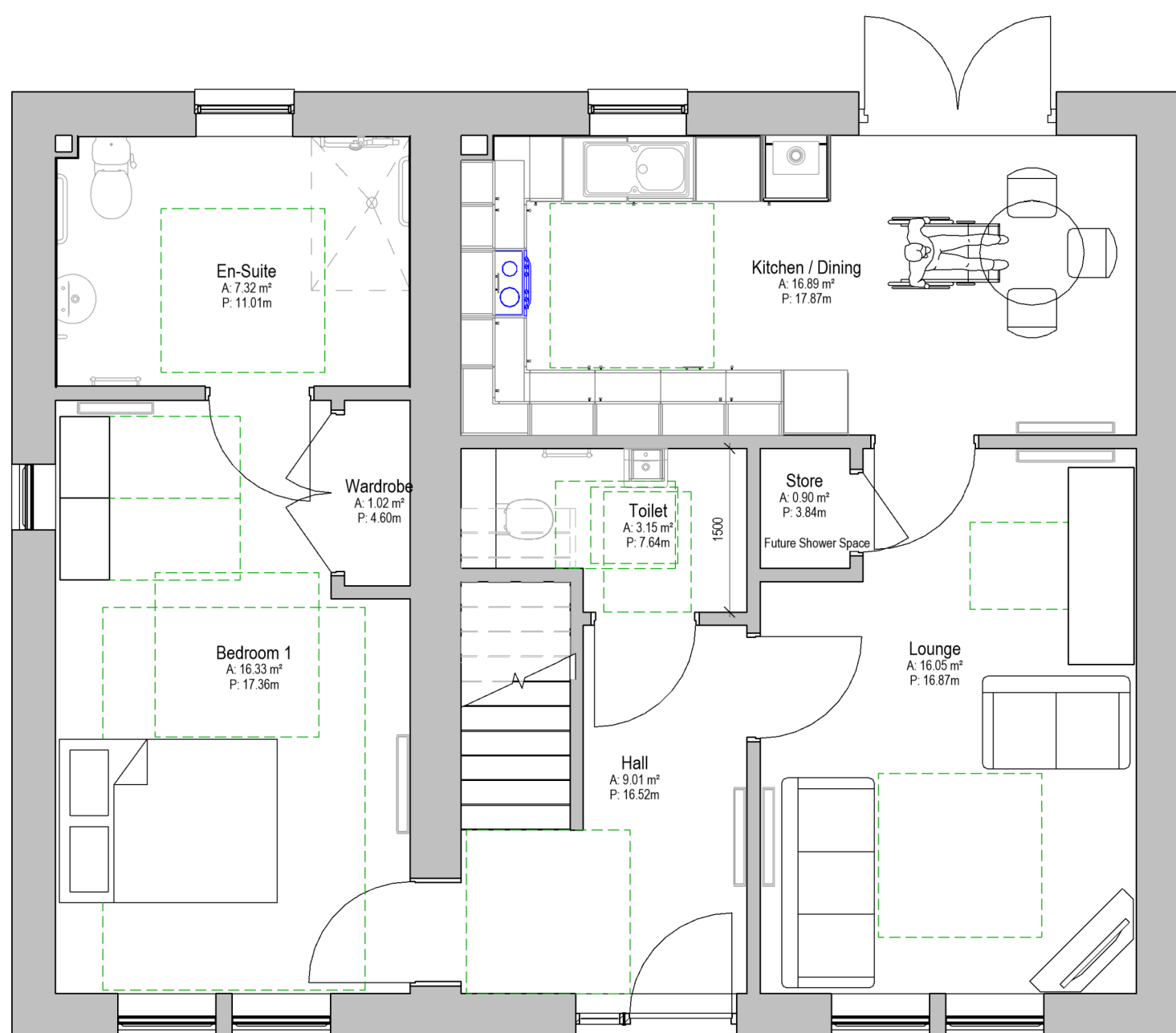
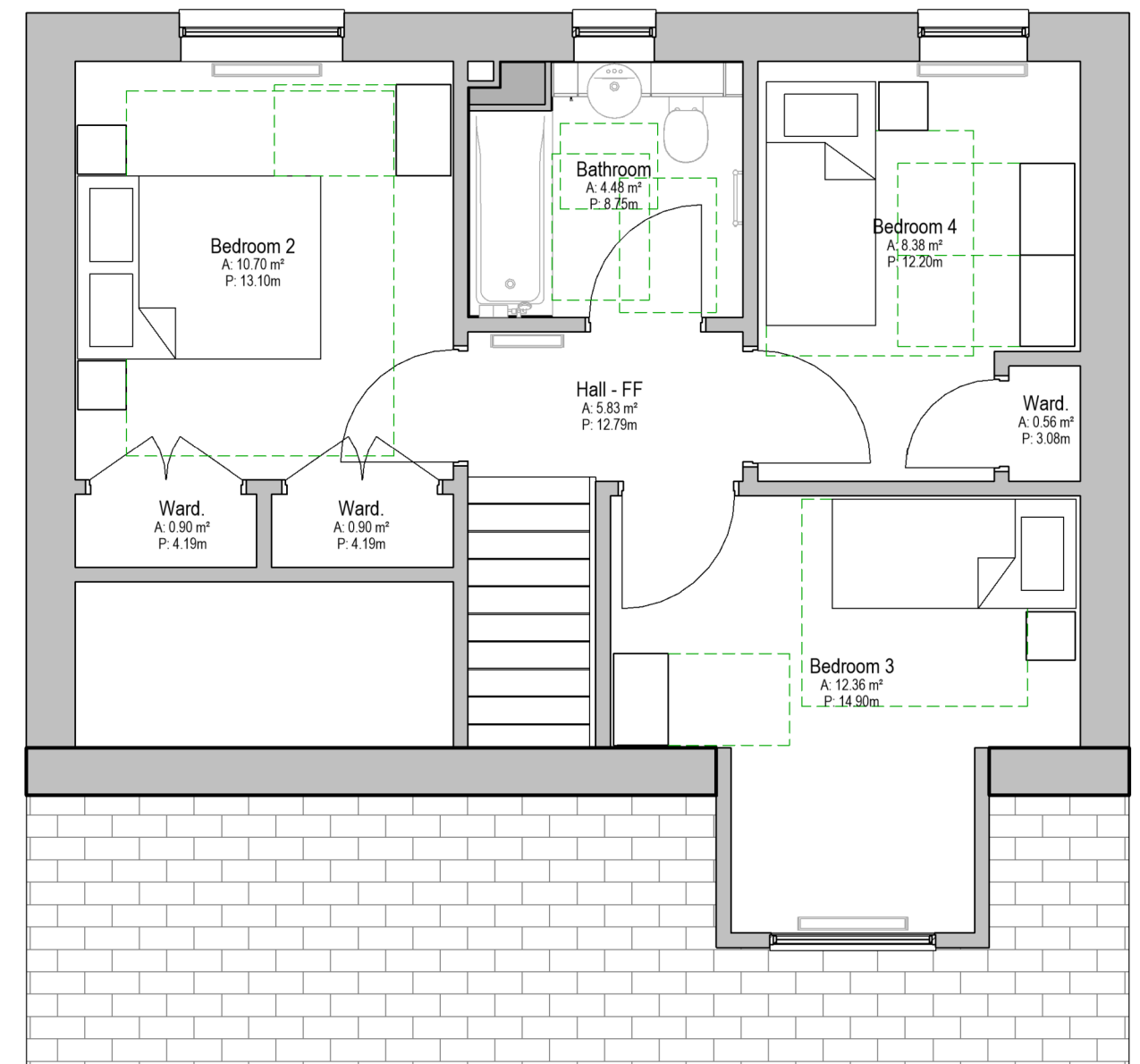
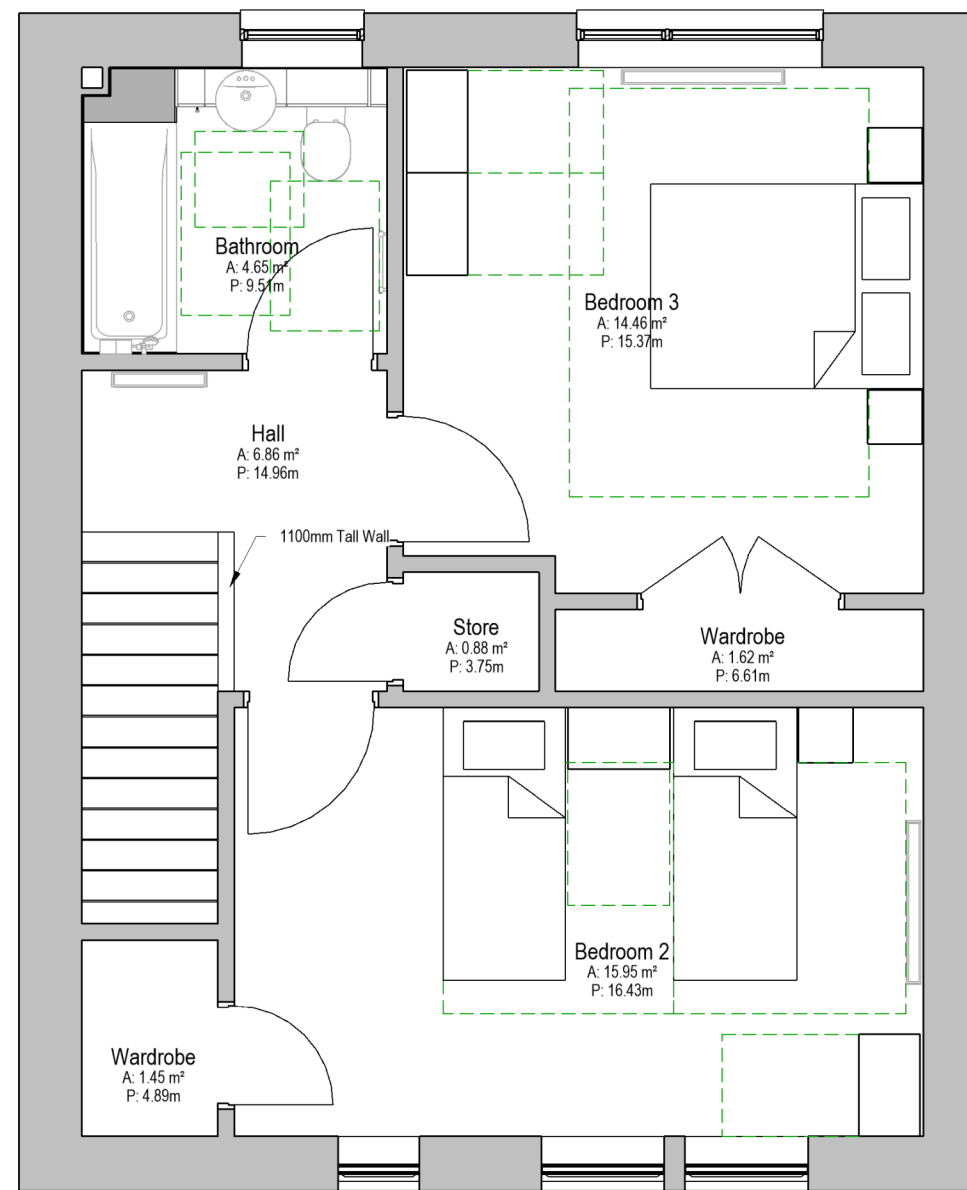
Proposed Housing Mix	No.
2Bed / 4Person Type A—General Needs	10
2Bed / 4Person Type B—General Needs	12
3Bed / 5Person Type C—General Needs	2
4Bed / 6Person Type D—Wheelchair liveable	2
3Bed / 6Person Type R—Wheelchair liveable	2
1Bed / 2Person Type P—Amenity Bungalow	2
2Bed / 3Person Type Q—Amenity Bungalow	9
2Bed / 3Person Type Q—Wheelchair Bungalow	4
Sheltered Housing— 1 Bed homes	19
Sheltered Housing— 2 Bed homes	9
TOTAL	71
RESIDENTS PARKING	51
PUBLIC PARKING	50



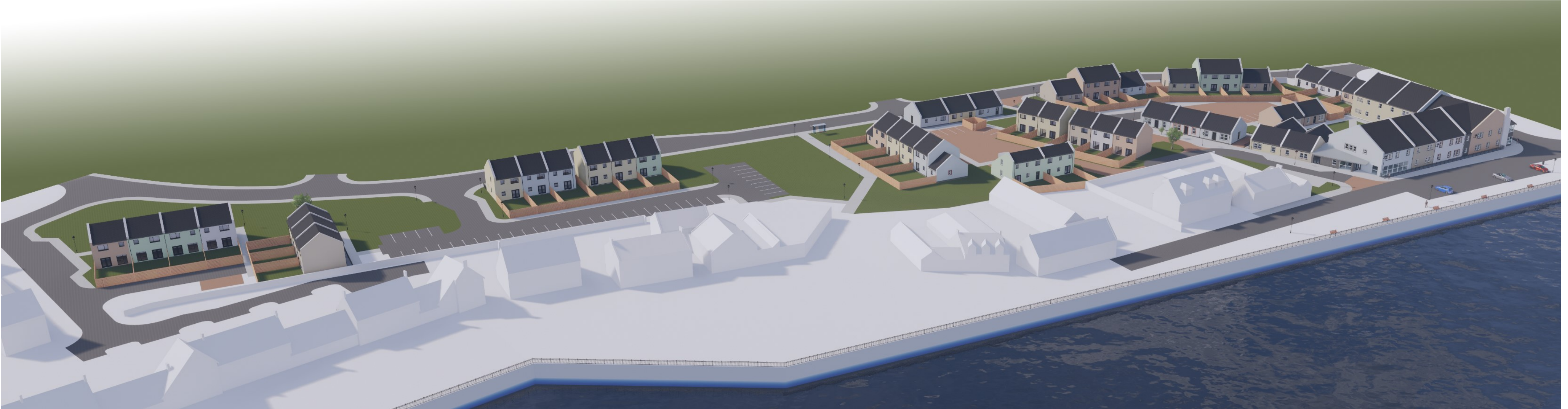
NAC Development - Burns Club Gardens, Dalry



View from Peter Street



FINAL PLANS CONSULTATION



Birds Eye View of Development



Materials: Zinc Cladding



Roof Tiling



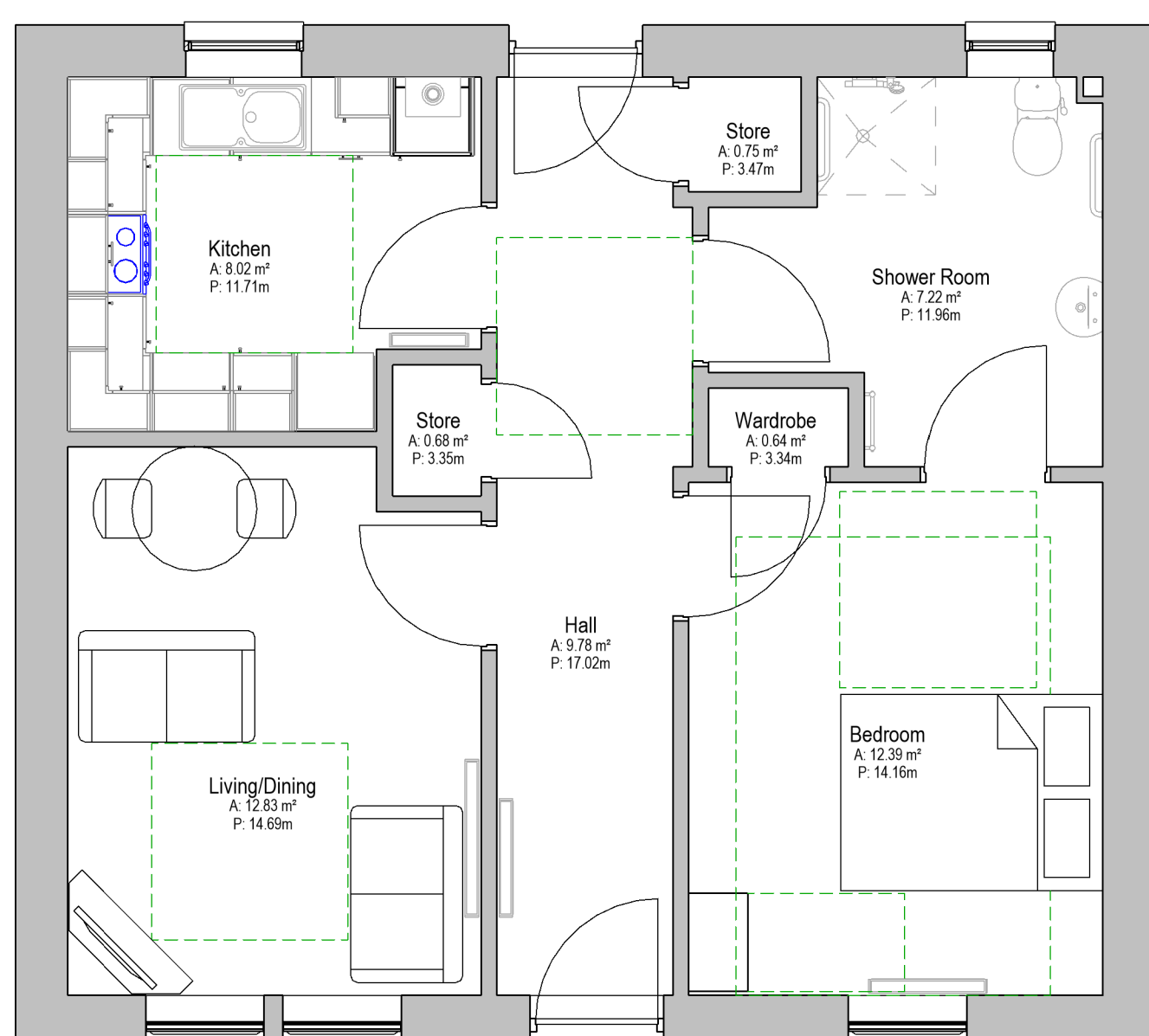
Landscaping setts



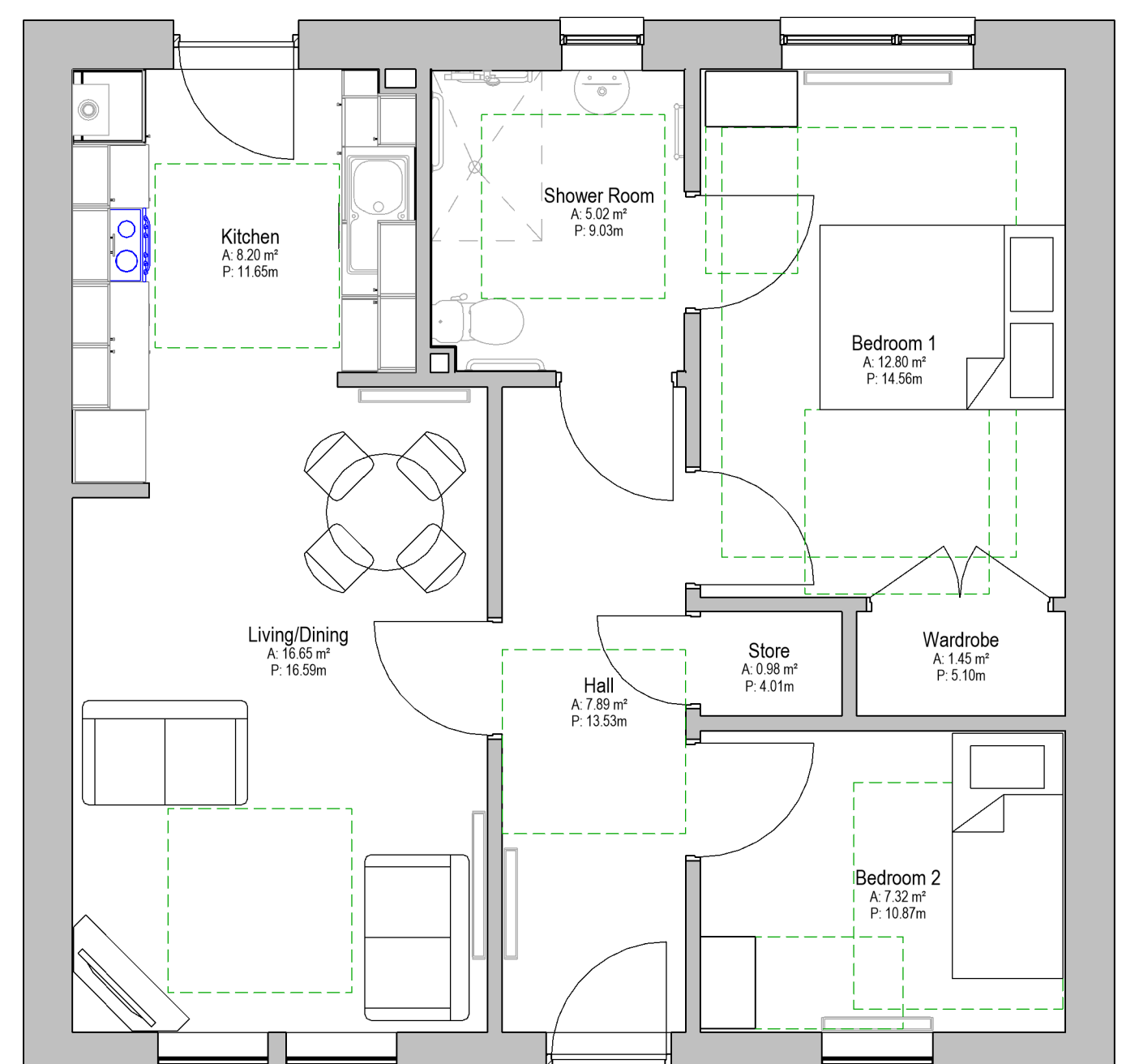
View looking towards Harbour Street



View from Harbour Street



Type P 1 Bed / 2 Person Amenity Bungalow



Type Q 2 Bed / 3 Person Amenity Bungalow



FINAL PLANS CONSULTATION



View of Sheltered Housing



Sash and Case Windows



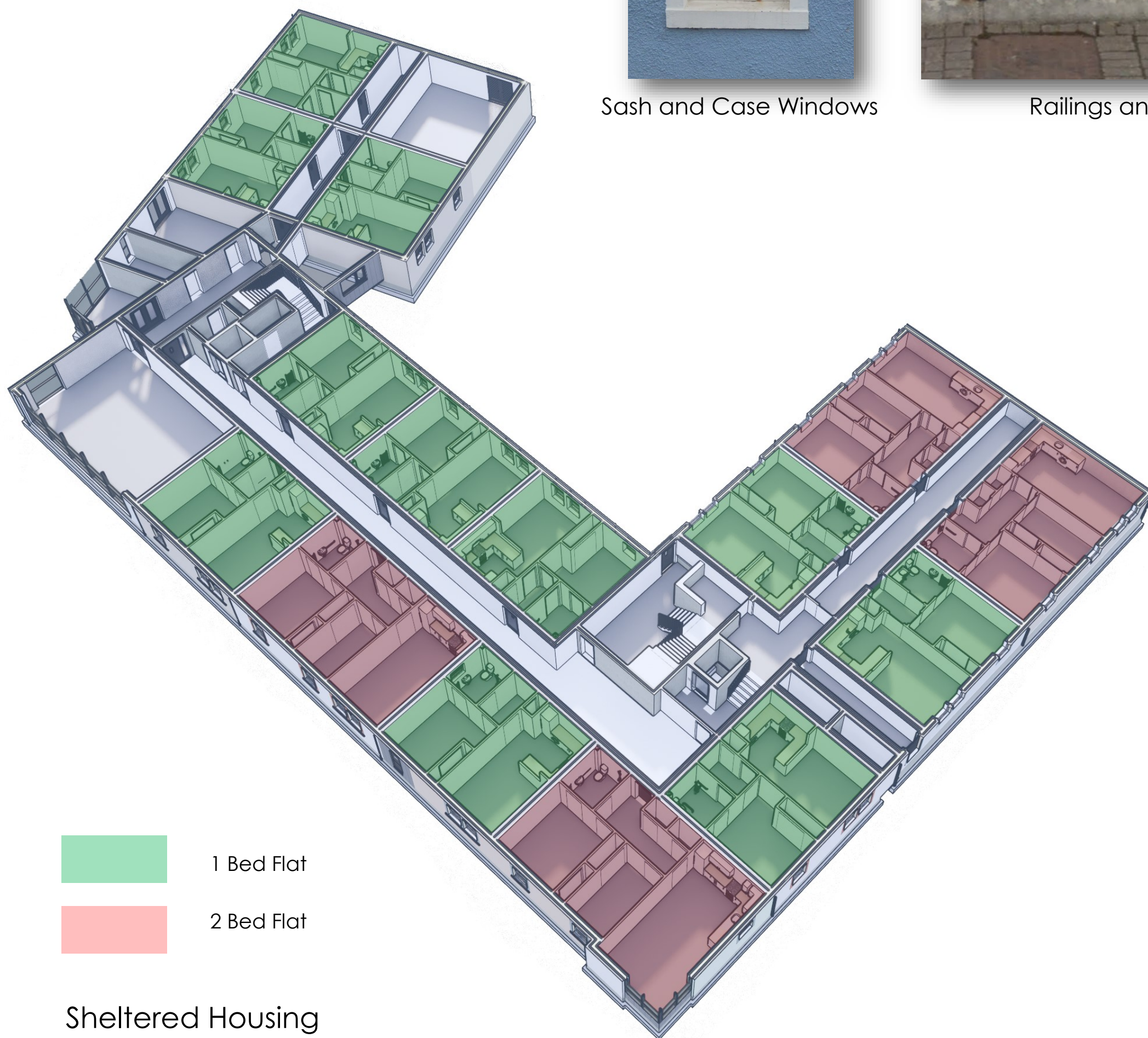
Railings and Gates



Zinc Cladding

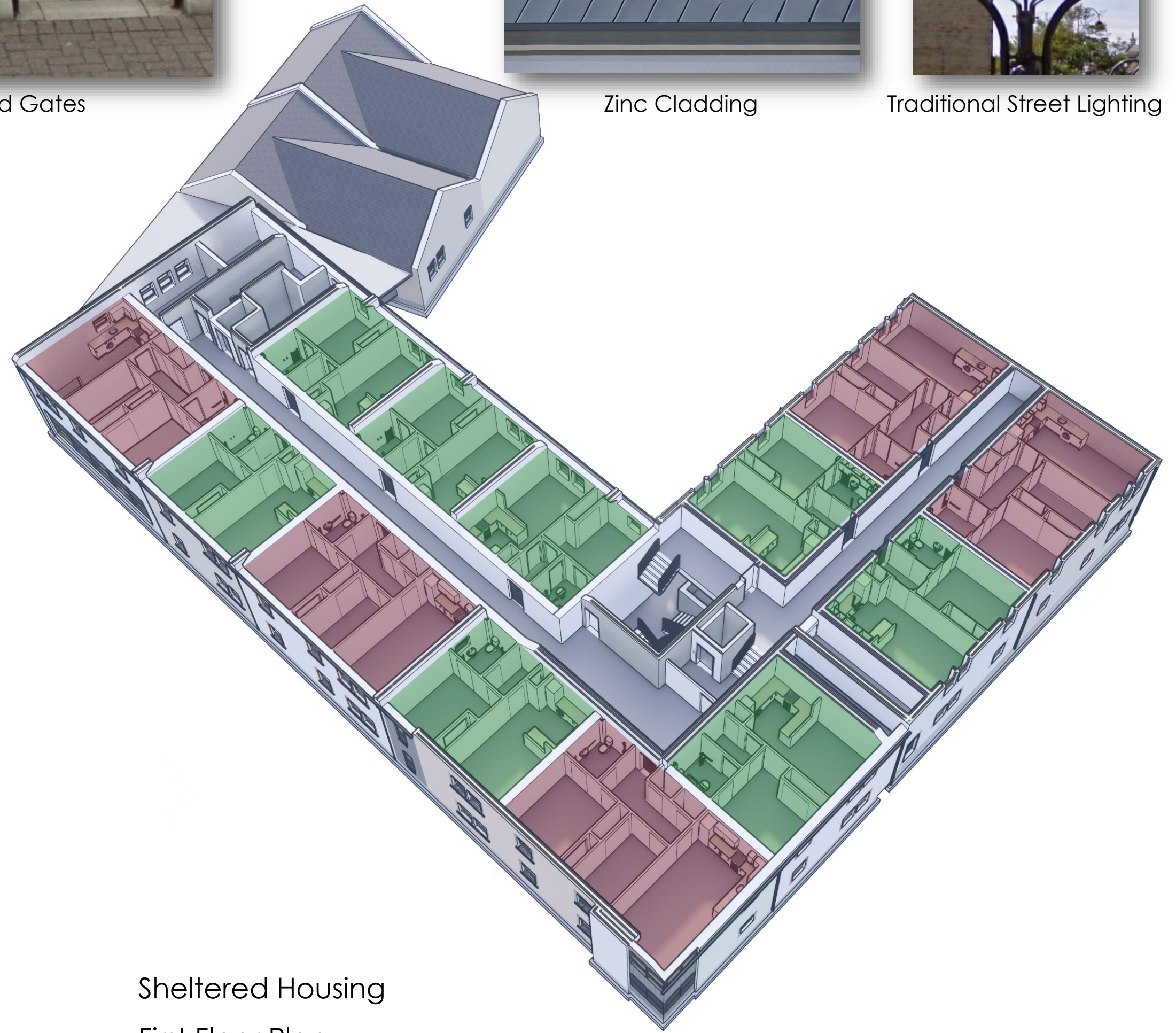


Traditional Street Lighting

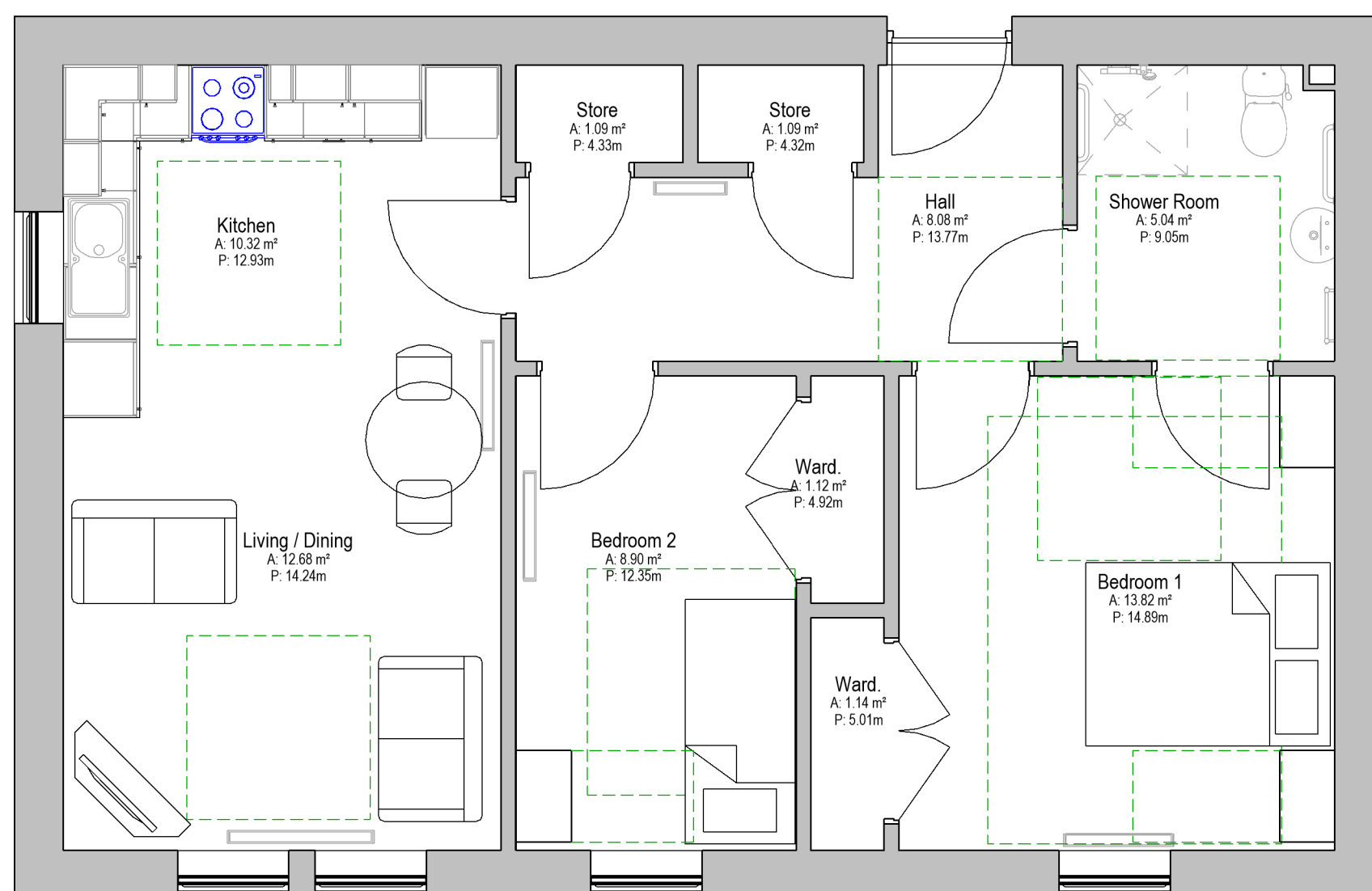


- 1 Bed Flat
- 2 Bed Flat

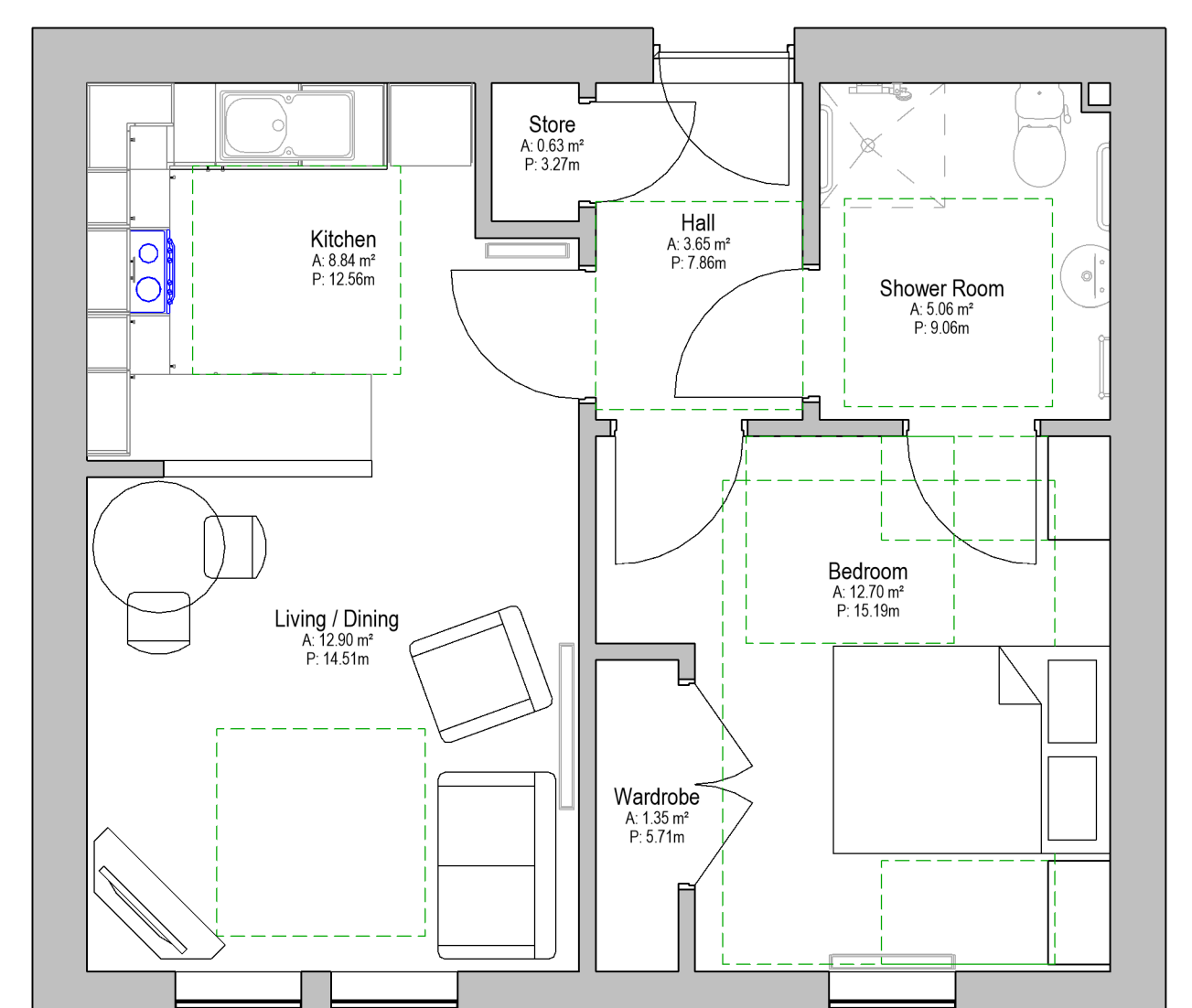
Sheltered Housing
Ground Floor Plan



Sheltered Housing
First Floor Plan



2 Bed
Sheltered Home



1 Bed
Sheltered Home

